

the chm as a tool for monitoring the implementation of the cdb: lessons learned from the Benin'S experience



Jean Didier T. Akpona, PhD

Researcher, LABEF/FSA/UAC

Co-Manager of CHM – Benin

ajeandidier@gmail.com

Sustainable Development Goals



Multilateral Environmental Agreements



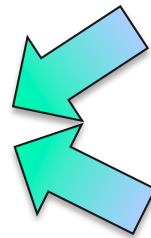
The Convention on Biological Diversity :
Agreement with a maximum of links with the
SDGs



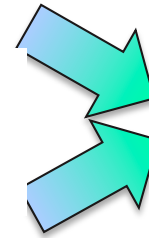
Déjà 24 ans 2

ASSUMPTIONS

OF



Implementation



Then

#impact

Best contribution to international commitments

Then

If



Improved national policy development

If



Best national monitoring and reporting

Then

If



Functional statistical systems

Information at the heart of the implementation of MEAs and SDGs



Clearing-House Mechanism(CHM)



Mission:

Contribute to the **implementation of the CBD** and its Strategic Plan for Biodiversity 2011-2020

**Effective
information
services**

Promote and facilitate scientific and technical cooperation, knowledge sharing and information exchange

Establish a fully operational network of Parties and partners

CONTRIBUTION TO THE IMPLEMENTATION OF CBD

Development of a CHM strategy linked to the NBSAP

Making the CDB accessible to stakeholders

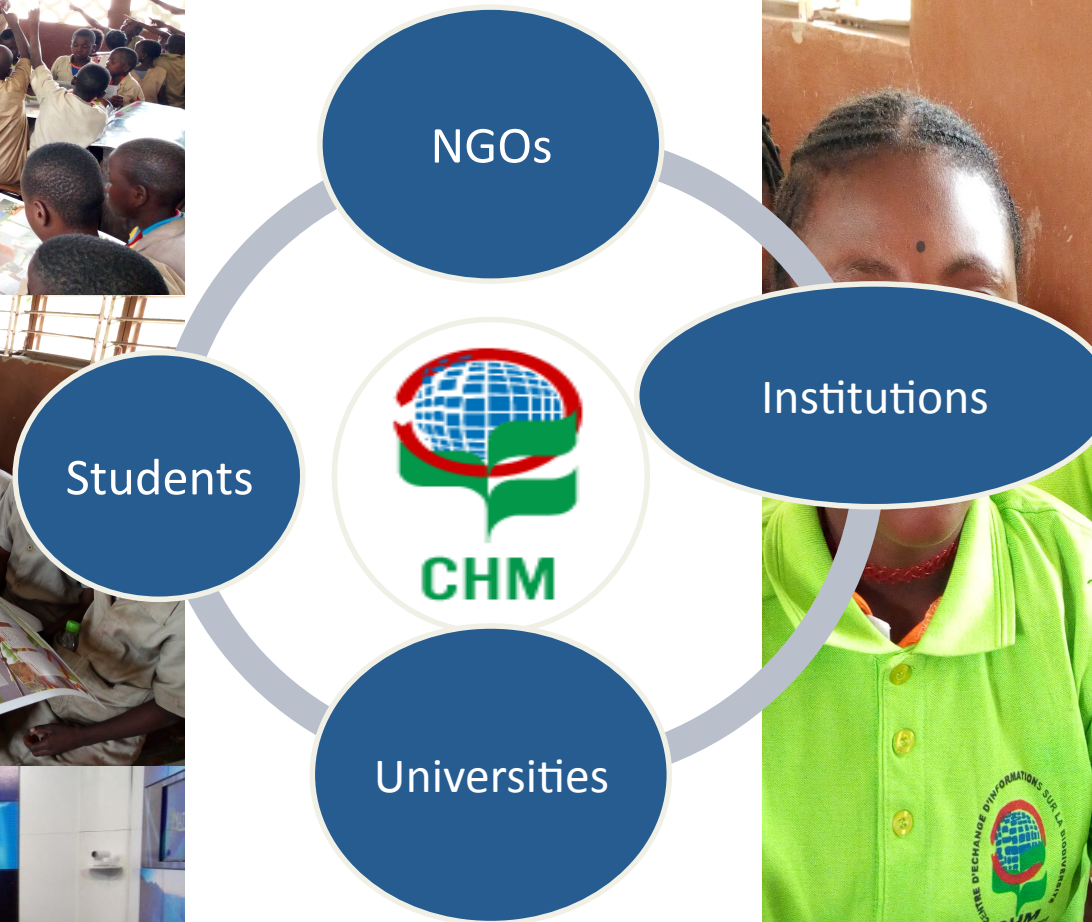
More than 5
Awareness posters!!



- Implementation of NBSAP
- Texts ratifying Conventions
- Different protocols (**ABS-ITPGRFA Protocols**)
- Abstracts of articles
- NGO platform

EFFICIENT INFORMATION SERVICES

Good practices: media, schools, dissemination materials (caps, T-shirts, etc ...)



EFFICIENT INFORMATION SERVICES

Good practices: decision makers, teaching and dissemination materials

Différentes étapes de développement d'un indicateur de la biodiversité

- 1 Identification et consultation des parties intéressées et du public
- 2 Identification d'objectifs généraux de gestion et d'objectifs quantifiables
- 3 Elaboration de questions clés et détermination de l'utilisation de l'indicateur
- 4 Développement d'un modèle conceptuel
- 5 Identification des indicateurs potentiels
- 6 Revue qualité des indicateurs du répertoire



Quels indicateurs pour le suivi efficace de la biodiversité au Bénin?

Par : Akpona A. Hugues, Djagoun C.A.M. Sylvestre, Akpona T. Jean Didier, Idohou Rodrigue, Glèlè Kakai Romain.



Area reforested annually by municipality

Benin MRV project among different decisions link with CHM. Percentage of forest land converted annually into other occupation categories

COP 13, and

SCIENTIFIC AND TECHNICAL COOPERATION

Conferences and teaching



Key topic:

Scientific Research and challenges for the forest sector in Benin

Biodiversity indicators and monitoring NBSAP

Protected areas management and ecosystem services

Promotion of research project results on fire and ecosystem services...

SHARING KNOWLEDGE



Raising awareness on biodiversity in Benin.



South-South cooperation and public awareness on the Convention



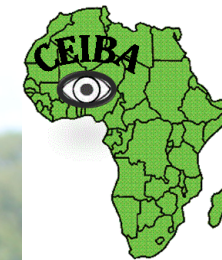
LESSONS LEARNED

Maintaining CHM Managers to Support Changing Focal Points



Also

- Need to set up a national information network on the environment;
- Sharing of information is not yet encrusted in cultural norms;
- Individual commitment of the actors is needed;
- **National data are the base for national and international reports;**
- Data are not used enough to produce statistical analyses and to support indicators;
- **Continue collaboration with CEBIOS and other partners.**



Biodiversity is a way for achieving the sustainable development goals. It needs convinced and passionate people like us. We need to believe in that and work hard.

Thanks



Belgium

partner in development



CEBioS