



**Isabelle Vertriest**  
WWF -Be  
28 05 2018



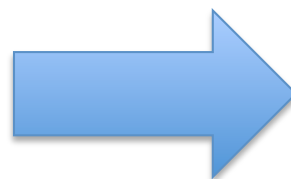
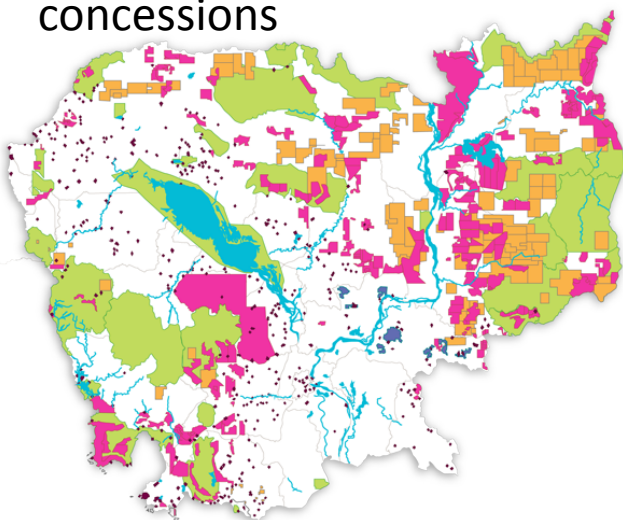
## Change the development paradigm

---

- Most NGO's, governments,.. still believe that deforestation is needed to develop poor people
- WWF can proof that poverty can be tackled based on sustainable use of forest, natural resources and conservation

# Social conservation for development

- WWF-BE in Cambodia: livelihoods and land access for communities
  - Several million hectares of forest are granted for agricultural (pink) and mining (orange) concessions



The communities lose access to their livelihoods and their land. **WWF-BE aims to secure and protect 56,412 ha in Kratie province by 2022**





# WWF LANDSCAPE APPROACH



Sustainable economic growth



Wildlife and habitat conservation



# WWF-BE in Cambodia: livelihoods and land access for communities

**WWF and its partners** support and strengthen Community forestries and Indigenous communities, and help them get an **official protected status**, alongside with a government approved sustainable land management plan.

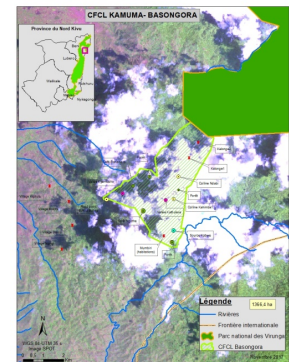
**The program also provides sustainable livelihood activities for revenue:**

- **Ecotourism**, big potential and dolphin experience
- **NTFP** helps to market this products : Rattan, mushrooms, resin, honey, medicinal plants, nuts, ....





# ECOmakala: an integrated program





# Some results & figures

Since 2008:

Approx. 11.000ha of tree plantations were realized

Approx. 70.000 efficient wood stoves were sold (of which approx. 40.000 in Goma (today approx. 1.000.000 inhab or 140.000 households): 30% less charcoal needed

Since 2015:

Approx. 1600 tonnes of charcoal produced (of which 1100t in 2017)

