

Report once, use many times !

Using the Target Cross-linking Tool of the national Clearing House Mechanism as a tool to facilitate the reporting process to the Belgian Biodiversity Strategy 2020, the Convention on Biological Diversity (CBD) and other international agreements.

Clearing House Mechanism under the CBD

Mission

To contribute significantly to the implementation of the Convention on Biological Diversity (CBD) and its Strategic Plan for Biodiversity 2011-2020, through effective information services and other appropriate means in order to promote and facilitate scientific and technical cooperation, knowledge sharing, and information exchange, and to establish a fully operational network of Parties and partners.

Belgian Clearing House Mechanism and the Target Cross-linking Tool

The **Belgian Clearing House Mechanism** was established 1998 in reply to decisions of the Conference of Parties. Between 1998 and 2006 it was a static information exchange portal with **available** official data on the implementation of the CBD in Belgium. Since 2006 it is using a Content Management System (ZOPE based) to involve stakeholders to share information on biodiversity activities towards the implementation in Belgium of the national biodiversity strategy.

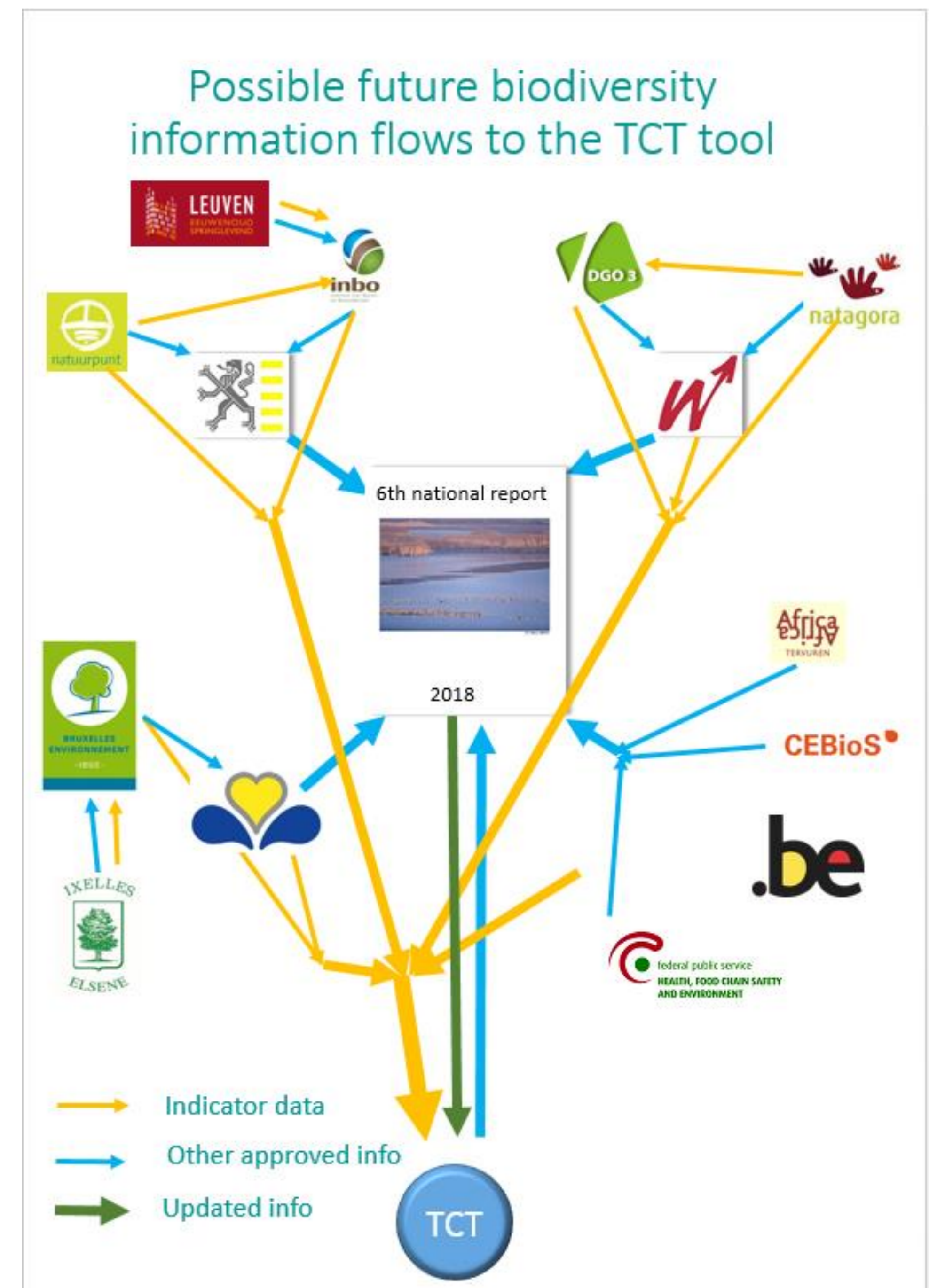
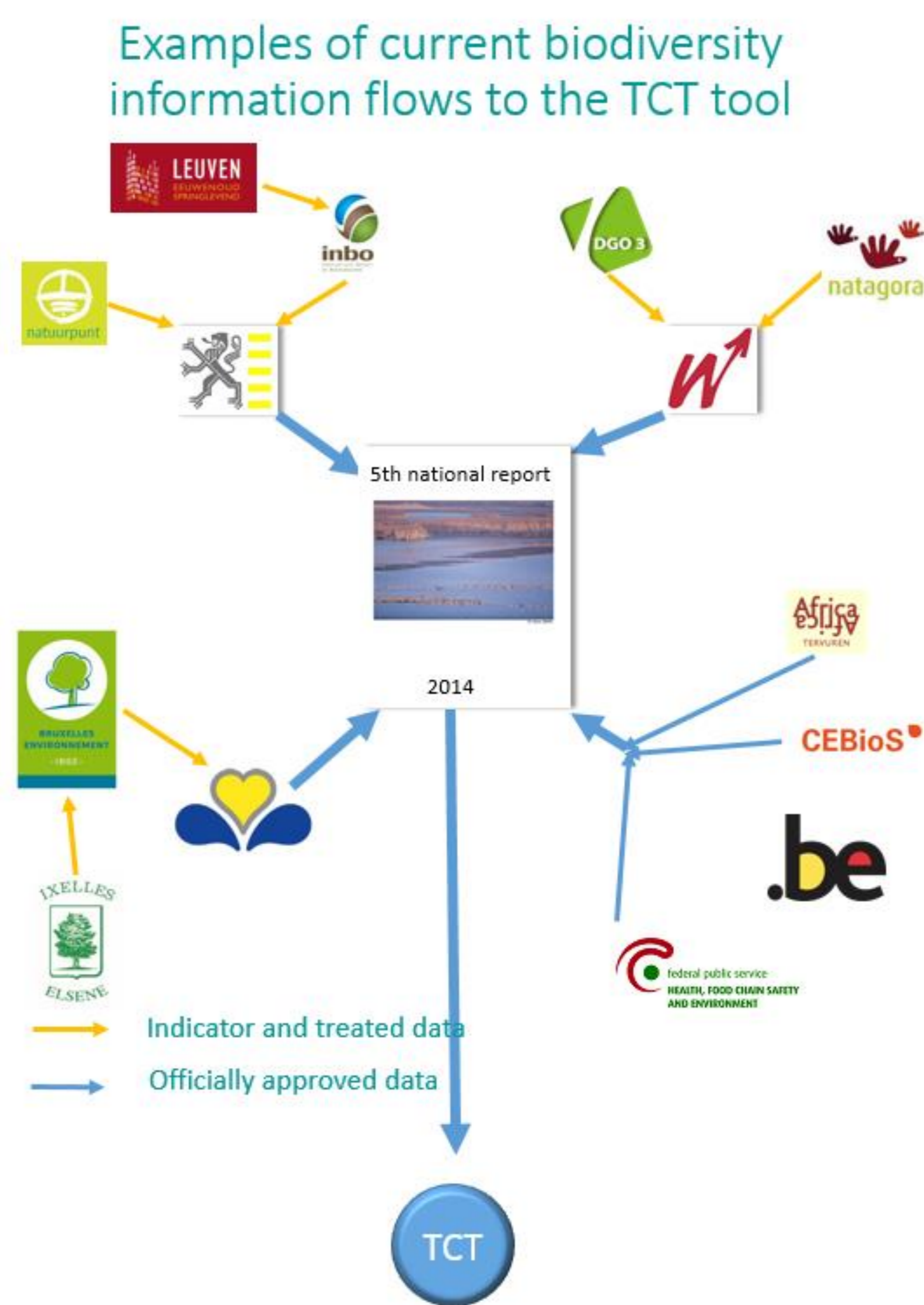
Since 2010 it is working in collaboration with the EU Commission, the European Environmental Agency and the EU Biodiversity Topic Center to develop the **Target cross-linking Tool** as a reporting tool to assist Countries to report on implementation of the national biodiversity strategies (Decision COP10/2: CHM as tool to follow up implementation).

Information in the tool is in a narrative part (officially approved by Regions, Communities and Federal level) and through indicators.

Indicators, used at this moment in the tool, are regional indicators, which are based on open data sets.

The information in the Tool can be used to prepare reports to the Belgian Biodiversity strategy 2020, the EU biodiversity strategy 2020, the Convention on Biological Diversity and several other Multilateral Environmental Agreements (MEAs).

The tool uses the AICHI biodiversity targets as the linking mechanism for the reporting. Discussions and negotiations are underway to enable direct reporting from the tool to the different MEAs reporting processes.



Possible biodiversity information flows from the TCT tool based on implementation of AICHI Targets

